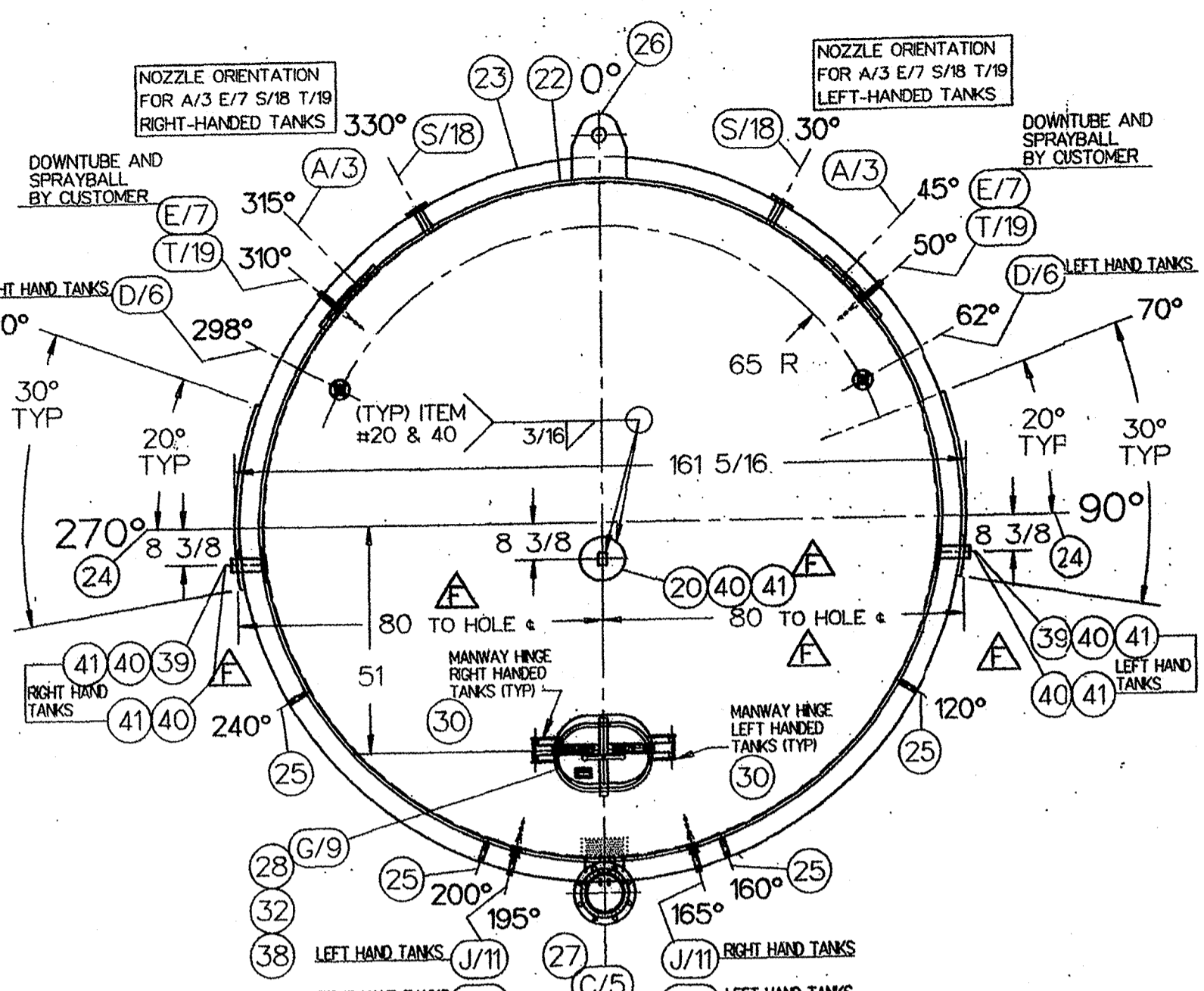
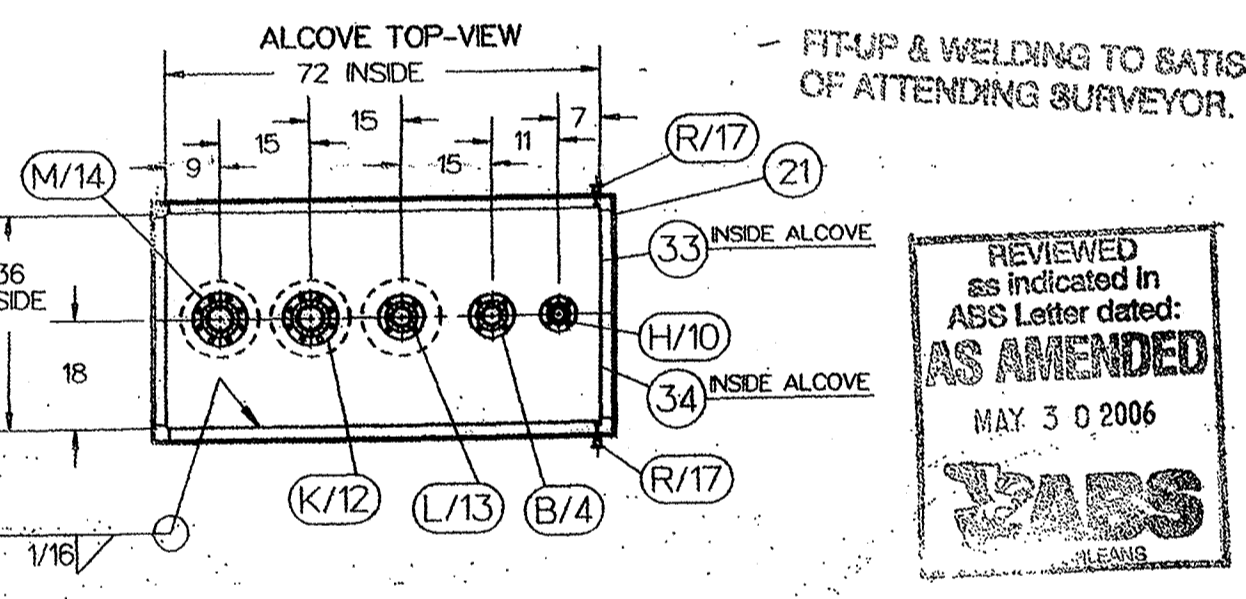


REAR HEAD AND SHELL ORIENTATION
(FLOATING SUPPORT END)



FRONT HEAD AND SHELL ORIENTATION
(FIXED SUPPORT END)



CERTIFIED CORRECT AND RELEASED FOR FABRICATION
THIS DRAWING INCORPORATES CHANGES REQUESTED ON APPROVAL DRAWINGS RETURNED BY YOU DATED 6-16-97... FABRICATION WILL BE IN ACCORDANCE WITH THIS DRAWING ANY FURTHER CHANGES WILL BE REVIEWED FOR COST AND DELIVERY ADJUSTMENTS PAUL MUELLER COMPANY
Signed: [Signature] Date: 6/16/97

REVIEWED as indicated in ABS Letter dated: MAY 3 0 2006
AS AMENDED

CUST NO.	ITEM NO.	NO. REQD	PART NO.	DESCRIPTION	DRAWING NO.
	28			TANK ASSEMBLY 45000 GAL MODEL "H" 304L S/S (LEFT-HANDED ORIENTATION)	FP09633D
	28			TANK ASSEMBLY 45000 GAL MODEL "H" 304L S/S (RIGHT-HANDED ORIENTATION)	FP09633D
	14			TANK ASSEMBLY 45000 GAL MODEL "H" 316L S/S (LEFT-HANDED ORIENTATION)	FP09633D
	14			TANK ASSEMBLY 45000 GAL MODEL "H" 316L S/S (RIGHT-HANDED ORIENTATION)	FP09633D
	1	2		HEAD CUSTOM F&D .25 S/S 149"OD 140"DR 12"KR 15"SF	
	2	1		SHELL .25 S/S W/12GA 304 S/S DIMPLED TEMP-PLATE 5.5" SPOT SPACING	
	A	3	4	SIGHT/LIGHT GLASS ASSY 6" S/S (CUSTOMER TO SUPPLY)	FP09869D
	B	4	1	FLANGE SLIP-ON 3" W/EXT S/S 150# SCH 40 (VENT)	FP09869D
	C	5	1	FLANGE SLIP-ON 8" W/EXT S/S 150# SCH 40 W/ 90° SR ELBOW & SCREEN FILL/SUCTION	FP09869D
	D	6	1	FLANGE PAD STUDDING 1.0" 150# S/S (SAMPLE) (SKP01153 C)	FP09869D
	E	7	2	FLANGE PAD STUDDING 6.0" 150# S/S (SPECIAL 6.25" DIA BORE) (CP SPRAY) (SKP01153 C)	FP09869D
	F	8	5	VALVE CHECK AIR BLOW 2" 316L S/S "TRI-CLOVER" (AIR AGIT)	FP09869D
	G	9	1	MANWAY ASSEMBLY MC-3	9500058D
	H	10	1	FLANGE SLIP-ON 2" W/EXT S/S 150# SCH 40 (LEVEL INDICATOR)	FP09869D
	J	11	1	WELL ASSY THERM .5" FPT 316L S/S 12.625" LG (TEMP INDICATOR)	9901275B
	K	12	1	FLANGE SLIP-ON 4" W/EXT S/S 150# SCH 40 (VENT)	FP09869D
	L	13	1	FLANGE SLIP-ON 3" W/EXT S/S 150# SCH 40 (PRESSURE RELIEF) WITH BAFFLE	FP09869D
	M	14	1	FLANGE SLIP-ON 4" W/EXT S/S 150# SCH 40 (VACUUM BREAKER)	FP09869D
	N	15	2	PIPE 2.5" SCH 40 304 S/S TOE (STEAM IN)	
	P	16	1	PIPE 2.0" SCH 40 304 S/S TOE (CONDENSATE OUT)	
	R	17	2	FERRULE 14MPHT 1.0" 304 S/S (ALCOVE DRAIN)	
	S	18	1	FLANGE SLIP-ON 1.5" W/EXT S/S 150# SCH 40 (LEVEL SWITCH HIGH)	FP09869D
	T	19	1	WELL ASSY THERM .5" FPT 316L S/S 12.625" LG (TEMP INDICATOR)	9901275B
		20	2	RE-PAD .25 THK S/S 10" DIA	FP09882D
		21	1	ALCOVE 16 GA 201LN S/S	FP09882D
		22	2	SADDLE PLATE .75" C/S HR SA-36 30"WIDE X 149" ID	FP09882D
		23	2	CHANNEL SUPPORT RING MC13 X 50 C/S SA-36 (ROLL TO 150.5" ID LEGS IN)	FP09882D
		24	4	SUPPORT PAD 1" THK C/S HR SA-36 12" WIDE X 42" LG (ROLL TO 159.375" ID)	FP09882D
		25	8	GUSSET 1" THK C/S HR SA-36 4" X 8"	FP09882D
		26	2	LUG LIFTING 1" THK C/S HR SA-36 12" WIDE	FP09882D
		27	1	SCREEN OUTLET .25" DIA PERFORATED 316L S/S (10" ID APPROX)	FP09869D
		28	1	9827413 GASKET MANWAY 15.5"x20.5" EXTENDED LEG RED SILICONE 50 DURO +-5	9500722B
		29	A/R	PAINT PRIMER SEE NOTE #19	
		30		PERMANENT STAMPED SERIAL NUMBER	
		31	1 PER BARGE	9900380 ENVELOPE ASSY INSTRUCTION SINGLE WALL TANK	
		32	1	8801101 PLATE NAME "MUELLER" 304 S/S 9"x1.68"x.025" THK W/3M#468 ADHESIVE	
		33	1	9803105 PLATE DATA "ASME" 18-8 S/S 5.5"x4"x.048" THK ETCHED	
		34	1	9803082 PLATE DATA "MUELLER" 5.25"x3.75"x.003" THK FOL W/3M#468 ADH	
		35	3	9808631 LABEL ATTENTION "BACKUP" 3"x2"x.005" THK MYLAR W/3M#468 ADHESIVE	
		36	2	9901403 LABEL "IN" 1.5"x5"x.005" THK MYLAR W/3M#468 ADH	
		37	1	9901404 LABEL "OUT" 1.5"x5"x.005" THK MYLAR W/3M#468 ADH	
		38	1	(REF) PLATE WARNING "PRESSURE" 316 / 316L S/S 3.5"x2"x 16GA THK (9900362)	
		39	5	RE-PAD .25 THK S/S 8" X 6"	FP09882D
		40	11	TUBING 3" X 2" X .180 WALL 304 S/S	FP09882D
		41	11	CAP 10 GA 304 S/S	FP09882D

NOTES:
1. ALL MATERIALS OR COMPONENT PARTS CALLED OUT ON THIS DRAWING SHALL BE AS SPECIFIED OR APPROVED EQUAL.
2. DIMENSIONS UNLESS OTHERWISE INDICATED, ARE NOMINAL AND STANDARD SHOP TOLERANCES ARE TO BE EXPECTED. (ENF 222 MEASUREMENTS FOR ANY FIELD ATTACHMENTS SHOULD BE VERIFIED ON SITE BY OTHERS BEFORE FABRICATION OF THE ATTACHMENTS.)
CORROSION DISCLAIMER
3. PAUL MUELLER COMPANY IS NOT RESPONSIBLE FOR CORROSION OR SUITABILITY FOR USE OF ANY MATERIAL IN ANY PARTICULAR APPLICATION. THE CORROSION RESISTANCE AND SUITABILITY FOR USE OF A MATERIAL IS DEPENDENT ON OPERATING ENVIRONMENT AND CONDITIONS, CLEANING PRACTICES, AND MANY OTHER FACTORS BEYOND THE CONTROL OF THE EQUIPMENT FABRICATOR. THE USER OF THE EQUIPMENT BEARS TOTAL RESPONSIBILITY FOR CORROSION OR SUITABILITY FOR USE OF ALL MATERIALS IN THEIR PARTICULAR APPLICATION.
4. ALL FLANGES WILL HAVE BOLT HOLES STRADDLE THE 0°-180° & 90°-270° CENTER LINES, UNLESS SPECIFIED OTHERWISE.
5. VESSEL TO BE VENTED FOR SHIPMENT.
6. ALL DIMENSIONS ARE IN INCHES UNLESS SPECIFIED OTHERWISE.
7. ALL WELD SIZES ARE MINIMUM AFTER GRINDING.
8. CORROSION ALLOWANCES: 0 INCHES.
9. PRODUCT SPECIFIC GRAVITY: 1.44
10. VESSEL DESIGNED FOR WIND LOAD: N/A
11. VESSEL DESIGNED FOR SEISMIC ZONE: N/A
12. CUSTOMER TO PROVIDE SUFFICIENT PIPE SUPPORT & PIPING EXPANSION JOINT TO PREVENT EXTERNAL NOZZLE LOADS.

NATIONAL BOARD
CERTIFIED BY
PAUL MUELLER COMPANY
VESSEL
DIV.1 MAX W.P. 9 P.S.I. AT 300 °F
W. MENT 32 °F AT 8 P.S.I.
SERIAL NUMBER 197327-1 thru 84
NOTE: 75 PSI VACUUM
HEAT TRANSFER SURFACE
MAX. W.P. 40 P.S.I. AT 300 °F
MENT 32 °F AT 40 P.S.I.

MATERIAL FINISHES
INTERIOR: HRAP (NOTE #15) EXTERIOR: HRAP
WELD FINISHES
INTERIOR: MEDIUM GRIND #3 (50) RA MAX (NOTE #15)
EXTERIOR: AS IS (A) (NOTE #23)

SPECIFICATIONS VESSEL
CODE ASME
RADIOGRAPHY
Top Head To Shell: NONE
Shell To Shell: NONE
Bottom Head To Shell: NONE
Heat Transfer CODE ASME
RADIOGRAPHY
Top Head To Shell: NONE
Shell To Shell: NONE
Bottom Head To Shell: NONE

SIZE (GALLONS) - MODEL
45000 GAL 197327-1 thru 84
VESSEL INFORMATION
DESIGN PRESSURE: 9 PSI DESIGN TEMP: 300 °F
HYDRO TEST PRESSURE: 15 PSI DESIGN VACUUM: 153 IN.HG.
HEAT TRANSFER INFORMATION
DESIGN PRESSURE: 40 PSI DESIGN TEMP: 300 °F
TEST PRESSURE: 68 PSI VOLUME: 5.95 CU FT.
HEATING / COOLING: STEAM /

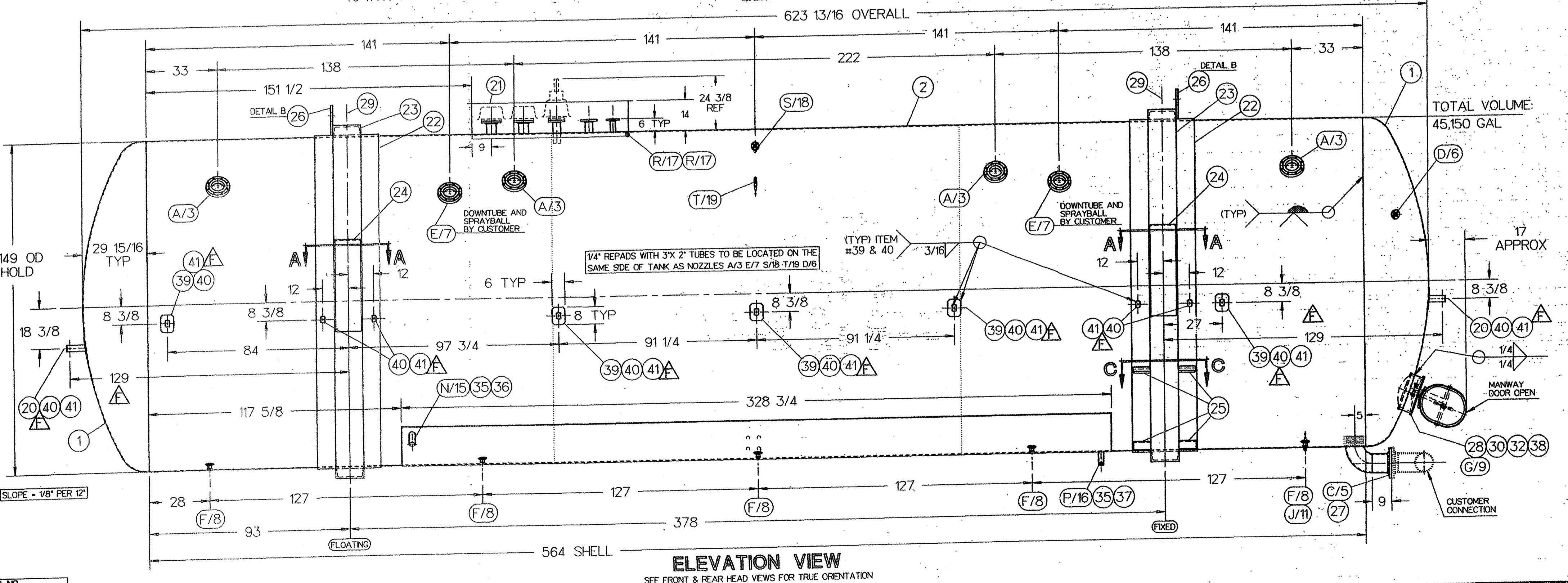
EST. EMPTY WEIGHT: 38,000 APPROX LBS
SCALE: 1/32"=1" (DO NOT SCALE THIS DRAWING)

DRAWN BY: M. MAHY DATE: 25APR97
REVIEWED BY: R. BECKMEIER DATE: 5-09-97
REVIEWED BY: T. LOVETT DATE: 7-2-97
APPROVED BY: R. BECKMEIER FP396 DATE: 7-2-97

SOLD TO: CARGILL CORN MILLING
ADDRESS: MEMPHIS TN
CUSTOMER ORDER NO.: PURCH AGRMNT
TITLE: TANK ASSY 45000 GAL
QUANTITY: 84 TOTAL -- 56 (304L) & 28 (316L)

This drawing and any part thereof is the property of the PAUL MUELLER CO., Springfield, Mo., and is subject to return on request of this company. The information shown is confidential and the recipient by accepting this drawing agrees not to use any information contained therein in any manner which will be detrimental to the PAUL MUELLER CO.
PAUL MUELLER COMPANY
P. O. BOX 828 / SPRINGFIELD, MISSOURI 65801-0828, USA
SALES ORDER & SERIAL NO.: 197327-1 thru 84
DRAWING NO.: FP09633 D

- ASME DATA PLATE "T" MARKING PER UG160(a) WHEN APPLICABLE.
- S/S SHEET PLATE (SA-240), C/S SHEET OR PLATE (SA-36)
- S/S ROD AND BAR (SA-479), C/S ROD AND BAR (SA-36)
- S/S PIPE (SA-312), C/S PIPE (SA-53)
- S/S TUBE (SA-213), C/S TUBE (SA-179)
- S/S BOLTS (SA-193 GR. B8), C/S BOLTS (SA-307 GR. B)
- S/S NUTS (SA-194 GR. B), C/S NUTS (SA-194 GR. 2H)
- S/S FORGINGS (SA-182), C/S FORGINGS (SA-188, (SA-105)
- S/S COUPLINGS (UG-11) OR SA-182
- REMOVE HEAT TINT ON INSIDE OF VESSEL DUE TO WELDING OF DIMPLED HEAT TRANSFER.
- ASME CODE JURISDICTION ENDS AT THE FIRST SEALING SURFACE EXCLUDING MANWAY.
- SUITABLE PRESSURE AND/OR VACUUM RELIEF VALVES MUST BE INSTALLED BY CUSTOMER FOR VESSEL OPERATION.
- SUITABLE PRESSURE RELIEF VALVE MUST BE INSTALLED BY CUSTOMER FOR HEAT TRANSFER OPERATION
- ALL CARBON STEEL SURFACES TO BE SP-10 (NEAR WHITE METAL) BLAST CLEANED AND PRIMED WITH JOTUN VALSPAR 13 F 12 INORGANIC ZINC PRIMER (1 MIL DFT) OR EQUAL.
- A SPREADER BAR MUST BE USED IF LIFTING LUGS ON VESSEL ARE USED TO LIFT TANK.
- TANK NUMBERING WILL BE AS FOLLOWS:
TANKS -1 thru -56 WILL BE 304L S/S
TANKS -57 thru -84 WILL BE 316L S/S
ALL ODD NUMBERED TANKS WILL BE LEFT HANDED ORIENTATION
ALL EVEN NUMBERED TANKS WILL BE RIGHT HANDED ORIENTATION
- REF: FP09869-D & FP09882-D FOR DETAILS.
- GLASS BEAD BLAST HEAT TINT ON EXTERIOR WELDS ON MANWAY.



ELEVATION VIEW
SEE FRONT & REAR HEAD VIEWS FOR TRUE ORIENTATION

SEPA FROM DWG. NO. FP09633