

AUCTION

HIGH-SPEED STAMPING & LATE-MODEL DIE MAKING FACILITY

Featuring: Late Mdl. Minster Presses, Bliss High-Speed Press, Servo Feed Equipment, OBI Presses, Straighteners, Horizontal Coil Feeders, Coil Reels, Horizontal Bandsaw, Late Model Die Making Machinery Incl. CNC Vertical Machining Center, Charmilles Robofil EDMs, Vertical Milling Machines, Surface Grinders, C-Frame Press, CMMs, Optical Comparators, Precision Instruments, Furnaces, Air Compressors, Forklifts, Electric Die Lifts, Overhead Cranes, Much More! **PLUS Real Estate for Sale by Private Negotiation (Subject to Prior Sale)**



< MINSTER 200 T. CAP. HIGH-SPEED STRAIGHT SIDE PRESS



> MORI SEIKI NV5000 B/40 VERTICAL MACHINING CENTER

CNC

2005

THURSDAY, OCTOBER 18 • 10:00 A.M.

INSPECTION: Wednesday, October 17
9:00 A.M. to 4:00 P.M. & Morning of Sale

A 10% BUYER'S PREMIUM WILL APPLY

At the premises of

ARCHER METAL PRODUCTS, INC.

17312 Bell North Drive

SCHERTZ (SAN ANTONIO AREA), TEXAS 78154

(See Directions on Back Page)



< CHARMILLES ROBOFIL 510 5-AXIS CNC WIRE EDM

2001

> BROWN & SHARPE GLOBAL FX-123010 DCC CMM

CNC

Read Terms and Conditions on Back Page of Brochure



2005

47" X 118" X 39"

Sale Conducted By:

PLANT & MACHINERY INC.

AUCTIONEERS • APPRAISERS • LIQUIDATORS • REAL ESTATE

Bob Braman TX LIC. #6362 • Ron Moore TX LIC. #7314

Jack Intrologator TX LIC. 11749

HOUSTON • DALLAS • ST. LOUIS

Headquarters:

2901 W. Sam Houston Pkwy. N., Suite A-130

Houston, TX 77043

PHONE: (713) 691-4401

FAX: (713) 672-7905

E-MAIL: pmi@pmi-auction.com

WEBSITE: www.pmi-auction.com



MINSTER 200 T. CAP. HIGH-SPEED STRAIGHT SIDE PRESS



BLISS 150 T. CAP. HIGH-SPEED STRAIGHT SIDE PRESS

HIGH-SPEED STRAIGHT SIDE PRESSES

MINSTER "PIECEMAKER" 200 T. CAP., Mdl. P2-200, 60" x 44" bolster, 4" stroke, 6" adj., 24" shut ht., spds.: 75–200 SPM, motorized adj. w/indicator, light curtain safety device, Helm Loadguard Mdl. TLG4500 Trend Series 4 tonnage monitor, Link System 2500 programmable limit switch, S/N P2-200-21754.

BLISS 150 T. CAP., Mdl. HP2-150-72X36, 4" stroke, 6" adj., 17" shut ht., 36" x 72" bed, 24" x 72" ram area, motorized adj. w/indicator, Link System 2500 programmable limit switch, operator's console, spds.: 0–100 SPM, light curtain safety device, S/N H-87803.

MINSTER "PIECEMAKER" 100 T. CAP., Mdl. P2-100-46, 46" x 31" bolster, 4" stroke, 4" adj., 20" shut ht., spds.: 0–160 SPM, pwr. adj. w/indicator, control console, Wintriss Die Pro 1500 die protection system w/(8) sensor inputs, Autaset Mdl. 1504 load analyzer, programmable cam outputs, S/N P2-100-24567.

HIGH-SPEED GAP FRAME PRESSES

STAMTECH 45 T. CAP., new 1999, Mdl. CAS-45H, 1.54" stroke, 8.67" die height, 2.96" slide adj., variable spds.: 100–400 SPM, 7-1/2 HP variable spd. drive motor, 28.37" x 18.12" bolster, 18.12" x 13.40" slide area, control console, S/N S80757.

BLISS 35 T. CAP., new 1979, Mdl. CH35, 2-1/2" stroke, 3" adj., 10-3/4" shut ht., spds.: 0–300 SPM, Sterling 5 HP variable spd. drive motor, dual palm button controls, S/N H68793.

OBI PUNCH PRESS

MINSTER 45 T. CAP., Mdl. 5, 4" stroke, 2.75" adj., 10.75" shut ht., 120 SPM, 28" x 18" bolster, Reeves type variable spd. drive, dual palm button controls, light curtain safety device, Link System 2500 programmable limit switch, Link System 1100 tonnage monitor, S/N 5-21104.



STAMTEC 45 T. CAP. HIGH-SPEED GAP PRESS



BLISS 35 T. CAP. HIGH-SPEED GAP PRESS



MINSTER #5 OBI PRESS & SERVO COIL FEEDER



**MINSTER
100 T. CAP.
HIGH-SPEED
STRAIGHT
SIDE PRESS**



LITTELL COIL REEL & STRAIGHTENER

2004



COIL HANDLING SYSTEMS SERVO ROLL FEEDER

SERVO FEEDERS

COIL HANDLING SYSTEMS MDL. DRS-3, new 2004, .100 max. material thickness, 18" max. material width, Indramat System 200 controls, guide rollers, entry cascade rolls, control console, press mtd., S/N 04-5187.

COE PRESS EQUIPMENT MDL. CPRFFN-112, 12" max. width, infeed cascade rolls, Coe Servo Master control system, press mtd., S/N 28414-9.

PA INDUSTRIES "THE EDGE" MDL. SRF-200, new 1999, .80" max. material thickness, 8" max. material width, S/N 12100399.

PA INDUSTRIES "ADVANTAGE" MDL. SRF-8, new 2000, .138" max. material thickness, 8" max. material width, control console, S/N 18080800.

STRAIGHTENERS

LITTELL MDL. 418-7PDL 7-ROLL, 18"W x .093" thk., entry and exit pinch rolls and guide rolls, S/N 85191-78.

LITTELL MDL. 412-7PD "SPECIAL" - 7-ROLL, 12"W x .100" thk., entry and exit pinch rolls and guide rolls, S/N 51806-53.

HORIZONTAL COIL FEEDERS

(2) COILMATE PRESSPAL 3,500 LB. CAP., new 1999, s/n 010748-1, S/N 010748-2.

COIL REELS

COOPER WEYMOUTH 5,000 LB. CAP., Mdl. 5000-18P, 18" max. stock width, 48" max. coil O.D., non-pwr., S/N 18192.

FEEDLEASE 4,000 LB. CAP., Mdl. PR-4M-18, 18" max. material width, manual expansions, variable spd. motor, loop controls, coil keepers, S/N 3657.

LITTELL 4,000 LB. CAP., 12" max. material width, 16" max. coil O.D., S/N 6-7691-79-2.

HORIZONTAL BANDSAW

BIRMINGHAM 9" X 16", new 1995, Mdl. BSN-916, 1" blade, variable blade spds.: 62-280 FPM, coolant base, portable stand, S/N 690334.

GANG TYPE DRILL

ALLEN 6-SPINDLE, (4) Mdl. MAVDW pwr. feed spndls., (2) MAVT manual tapping drilling spndls., variable head spds.: 75-2,000 RPM, oil groove production table w/elevation screws, S/N 33747.

**COMBINATION
BELT/DISC SANDER**

WILTON, 6"W. swivel belt, 12" disc sander, both w/tilting tbls., cabinet base.



COE SERVO ROLL FEEDER



FEED LEASE 4,000 LB. COIL REEL



BIRMINGHAM HORIZONTAL BANDSAW

1995



CNC

CHARMILLES ROBOFIL 510 5-AXIS CNC WIRE EDM



CNC

CHARMILLE ROBOFIL 310 5-AXIS CNC WIRE EDM

CNC WIRE TYPE EDMs

CHARMILLES TECHNOLOGIES ROBOFIL MDL. 510P - 5-AXIS, new 2001, 47.2" x 27.5" max. part dims., 15.7" max. height, 2,204 lb. max. load cap., 27.5" X-axis, 15.7" Y-axis, 15.7" Z-axis, 27.5" U-axis, 15.7" V-axis travels, .004" to .01" wire dia., wire spds.: 0-59 IMP, 0 to 30 deg. adj. rake angle, 11.8" max. height for auto. thdng., Isopulse generator system, auto. wire threader, Advantage Mdl. IK-2APT, 20HFX chiller system, S/N 560202.

CHARMILLES TECHNOLOGIES ROBOFIL MDL. 310 - 5-AXIS, new 1993 33.5" x 19.7" max. part dims., 15.7" max. height, 1,102 lb. max. load cap., 15.7" X-axis, 9.8" Y-axis, 15.7" Z-axis, 15.7" U-axis, 9.8" V-axis travels, .004" to .01" wire dia., wire spds.: 0-59 IM, 0 to 30 deg. adj. rack adj., auto. wire threader, Advantage Mdl. XC-2APT, 20HFX chiller system, S/N 22352.

RAM TYPE EDM

CHARMILLES TECHNOLOGIES FORM 20, new 1990, 360 mm 14.2" max. dist. btn. tbl. surface and ram, 11.81" X-axis travel, 9.84" Y-axis travel, 9.84" Z-axis slide travel, 440 lb. max. workpiece weight, 55 lb. max. electrode weight, 15.74" x 11.81" tbl., 23.6" L. x 15.74" W. x 7" ht. tank, 32 amp machining generator, Isocut Mdl. E10 orbital unit, 3R 20 mm shank electrode chuck, Heidenhain 3-axis DRO, 12" sq. perm. magnetic chuck, S/N 200039.

EDM DRILL

SODICK MDL. K1C, new 1990, 15" x 15" worktable, 7.87" X-axis travel, 11.81" Y-axis travel, 9.85" Z-axis travel, 220 lb. cap. max. weight of workpiece, 15.7" max. mountain length of electrode, 4.72" to 8.68" dist. top of worktable to guide holder, 20 amp max. machining current, S/N K1C-85031187.

CNC VERTICAL MACHINING CENTER

MORI SEIKI MDL. NV5000 B/40, new 9/2004, installed 3/9/2005, MSX-5011MB (Fanuc 16i) CNC control w/Mapps II conversational auto. programming, 23.6" x 52.0" tbl., 2,640 lb. max. tbl. load cap., 40.15" X-axis travel, 20.07" Y-axis travel, 20.07" Z-axis travel, 5.90" to 25.98" dist. from tbl. surface to spndl. gage line, 1,653 IPM rapid traverse rate, cutting feeds: .04-1,653 IPM, Cat 40 spndl. taper, variable spndl. spds. to 14,000 RPM, 30/25 HP spndl. drive motor, 30 tool auto. tool changer, through spndl. coolant, Caps-Server network transfer software, S/N NV501D12206.



CNC

CHARMILLES RAM TYPE EDM & SODICK EDM DRILL



CNC

MORI SEIKI NV5000 B/40 VERTICAL MACHINING CENTER



CNC

MILTRONICS PARTNER IV CNC VERTICAL MILLING MACHINE



1998

OKAMOTO ACC-1632ST AUTOMATIC SURFACE GRINDER



1996

ACER 8" X 18" AUTOMATIC SURFACE GRINDER

THURSDAY, OCTOBER 18 • 10:00 A.M.

INSPECTION: Wednesday, October 17
9:00 A.M. to 4:00 P.M. & Morning of Sale

CNC VERTICAL MILLING MACHINE

MILTRONICS PARTNER IV, new 1993, Series F, Centurion 1 CNC control, 13" x 42" tbl., 32" X-axis, 16" Y-axis, 5" Z-axis travels, Cat 40 spndl. taper, spds.: 50–3,750 RPM, 5 HP spndl. drive motor, pwr. drawbar, S/N 3768.

BRIDGEPORT SERIES 1 PROTOTRAK, 9" x 48" tbl., 26" X-axis, 12" Y-axis travels, 5" manual quill travel, 60–4,200 RPM spndl. spds., 2 HP drive motor, SWI Prototrak Plus 2-axis CNC control, S/N 232135.

VERTICAL TURRET MILLING MACHINES

BRIDGEPORT SERIES 1, 9" x 48" tbl., 2 HP motor, Acu-Rite 2-axis DRO, S/N 265961.

CHEVALIER MDL. FM-3VKH, new 1995, 9" x 48" tbl., servo longitudinal power feed, Sony 2-axis DRO, S/N HM86B312.

BIRMINGHAM MDL. BPS, 9" x 48" tbl., servo longitudinal pwr. feed, belt driven spndl. head, spds.: 80–5,600 RPM, Mitutoyo 2-axis DRO, S/N 007075.

AUTOMATIC SURFACE GRINDERS

OKAMOTO 16" X 32", new 1998, Mdl. ACC-16.32ST, 14"/12" x 1-1/2" x 5" bore grinding wheel, .9" to 20.6" vert. clearance w/14" wheel, 1.9" to 21.6" vert. clearance w/12" wheel, 1,550 lb. max. weight of workpiece, 16" x 33.5" table, 37.4" longitudinal travel, 17.3" cross travel, 5 HP grinding wheel motor, paper filter coolant system, incremental downfeed, hyd. over-the-wheel dresser, Sony 2-axis DRO, S/N 88085.

ACER 8" X 18", new 1996, Mdl. Supra 818, 3/4" x 6" wheel size, incremental downfeed w/digital downfeed controls, Fagor 2-axis DRO, vacuum coolant system, Walker 8" x 18" fine line electromagnetic chuck, hyd. longitudinal and cross feeds, digital downfeed, spark-out timer, full auto. cycles, S/N 96030218.

HAND FEED SURFACE GRINDERS

(2) BRIDGEPORT HARIG MDL. 618 BALLWAY, new 1999, cast iron base, 6" x 18" perm. magnetic chuck, Acu-Rite 2-axis DRO, S/N B10605-W, S/N B10606-W.

AIR/HYDRAULIC C-FRAME PRESS

AIR HYDRAULICS MDL. C300, AB programmable controls, full enclosure, dual palm operator controls, rolling fabricated frame, S/N 9216.



CNC

BRIDGEPORT PROTOTRAK CNC VERTICAL MILLING MACHINE



1995

CHEVALIER VERTICAL TURRET MILLING MACHINE



1999

2 AVAILABLE

BRIDGEPORT HARIG 6" X 18" HAND FEED SURFACE GRINDER



BROWN & SHARPE GLOBAL FX-123010 DCC CMM



BROWN & SHARPE MICROVAL 454 MANUAL CMM

COORDINATE MEASURING MACHINES

BROWN & SHARPE GLOBAL MDL. FX123010 DCC, new 2005, Measuring Range: 47.24" X-axis travel, 118.1" Y-axis travel, 39.4" Z-axis travel, 52.4"W. x 153.5"L. x 40.9" ht. max. workpiece size, 5,000 lb. cap. max. workpiece weight, Renishaw PH10M motorized probe holder w/ PHC10-2 probe head control, Mdl. SP25M probe, Renscan Probing System 20 probe head, Renishaw PI200 probe interface, Mdl. MRS modular probe rack system, Renishaw Mdl. HCU1 motorized hand control unit, Arrow Mdl. F-05/10 refrigerated air dryer, Hewlett-Packard PC system w/PC-DMIS measuring software, overall dims: 71.3"W. x 172.4"L. x 135.4" ht., 23.6" ht. worktable dist. from floor, 47.2", S/N 0805-6603.

BROWN & SHARPE "MICROVAL" 454 MANUAL, 18" x 20" x 16" measuring range, .0004" volumetric accuracy, .002" linear accuracy, overall dims; 35.25"L. x 34.8"W. x 62" ht., 500 lb. max. part weight, 22" X-axis travel, 29.5" Y-axis travel, 19" Z-axis travel, Brown & Sharpe Microscan computer system, Measuremax software, Renishaw MIP manual tilt probe holder, S/N 035122.

OPTICAL COMPARATORS

MITUTOYO MDL. PH-14LS, 10x lens, surface illumination, Quadra-Chek 200 DRO w/computational ability, cabinet base mtd., Code 172-804A, S/N 010268.

SUBURBAN TOOL MASTerview MDL. NV-14, new 1996, Mitutoyo digital vernier gauges on tbl., cross, and elevation, 10x lens, rotating fixture vise, surface profile illumination, S/N 2596-0010M.

PRECISION INSTRUMENTS

BROWN & SHARPE TESA HEIGHT 600 DIGITAL HEIGHT GAUGE, new 2002, Type 007.30042, S/N 2A00402; **(2) ROCKWELL MDL. HR-150A HARDNESS TESTERS**, new 1997, S/N 0122, S/N 0012; **VIS 1" TO 12" MICROMETER SET** w/standards; **MITUTOYO 12" DIAL TYPE HEIGHT GAUGE**; **MITUTOYO 12" VERNIER HEIGHT GAUGE**; **VERMONT 1.3 TO 1.96 METRIC PIN GAUGE SET**; **VERMONT .061 TO .250 PIN GAUGE SET**; **.251 TO .500 PIN GAUGE SET**; **JIT .100 TO 4" - GRADE 2 GAUGE BLOCK SET**; **(1) GRADE A 24" X 48" PRECISION GRANITE SURFACE PLATE**, (1) on fabricated steel stand.

ELECTRIC FURNACES

PARAGON, 18"W. x 18"dp. x 10" ht., 2,000 deg. F. max. temp., 220 v., sgl. phase, 30 amp, 7,200 watts, DCT 1000 digital temp. controls, cabinet style, Part No. HT220, S/N 337424.

CRESS MDL. 122012/942, 230 v. AC, 25 amp, digital temp controls, timer alarm, S/N 9809.

MISCELLANEOUS SHOP & WAREHOUSE EQUIPMENT

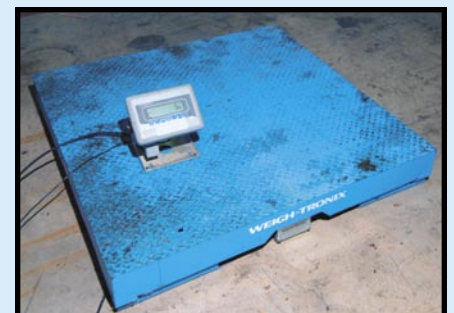
CUSTOM RATCHET STYLE ARBOR PRESS; **MILLING VISES**; **CLAMPING KITS**; **R-8 COLLETS**; **CAT-40 TOOLHOLDERS**; **FASTENERS**; **HAND TOOLS**; **ASSORTED ELECTRIC POWER TOOLS**; **EXPENDABLE TOOLING**; **WORKBENCHES**; **SANDERS**; **DOUBLE END GRINDER**.



MITUTOYO OPTICAL COMPARATOR



PARTIAL VIEW OF PRECISION INSTRUMENTS



WEIGHTRONIX 10,000 LB. DIGITAL PLATFORM SCALE



2002



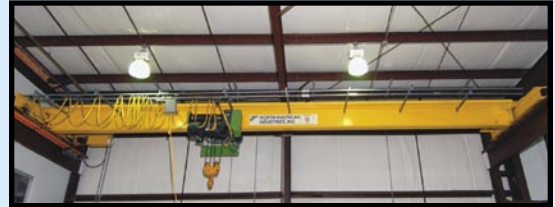
1999

INGERSOLL-RAND ROTARY SCREW AIR COMPRESSOR

HYSTER 8,000-LB. CAP. FORKLIFT



NORTH AMERICAN 25 T. CAP. DOUBLE GIRDER OVERHEAD BRIDGE CRANE



15 T. NORTH AMERICAN SINGLE GIRDER OVERHEAD BRIDGE CRANE

GLOBAL AUCTION

**THURSDAY
OCTOBER 18
10:00 A.M.**

INSPECTION: Wednesday, October 17
9:00 A.M. to 4:00 P.M. & Morning of Sale

AIR COMPRESSORS & SUPPORT EQUIPMENT

INGERSOLL-RAND MDL. SSR-EP50SE ROTARY SCREW, new 2002, 215 CFM @ 125 PSI, 50 HP drive motor, skid mtd., air cooled, noise enclosure, S/N G6605U00264.

QUINCY MDL. QSB30AMA31P ROTARY SCREW, skid mtd., air cooled, 30 HP motor, S/N 93730H.

CHAMPION MDL. HR5-8 RECIPROCATING TYPE, 5 HP motor, 80 gal. horiz. tank, tank mtd., S/N R15147710.

SEARS CRAFTSMAN RECIPROCATING TYPE, 6 HP motor, 15 SCFM @ 40 PSI, 11.5 SCFM @ 90 PSI, 240 v., 60 gal. vert. tank, tank mtd.

INGERSOLL-RAND THERMOSTAR MDL. TS250 REFRIGERATED AIR DRYER, new 2001, 250 CFM cap., S/N DR10010899-022601.

INGERSOLL-RAND THERMOSTAR REFRIGERATED AIR DRYER, 200 CFM cap.

400 GAL. CAP. VERTICAL AIR RECEIVER, new 2001.

200 GAL. CAP. VERTICAL AIR RECEIVER, new 1998.

MISCELLANEOUS MATERIAL HANDLING EQUIPMENT

(15) SECTIONS OF ADJUSTABLE PALLET RACKING, tier drop style, 8' cross members, 12' upright height, 42" F-B; **SKATE WHEEL CONVEYOR** on rack; **10' SECTIONS OF VARIOUS WIDTH MTD. PRODUCTS SKATE WHEEL CONVEYOR**; **WEIGHTRONIX 10,000LB. CAP. DIGITAL PLATFORM SCALE**, Mdl. BS4848-10, 48" platform, DRO, S/N 46371.

FORKLIFTS

HYSTER 8,000 LB. CAP. MDL. S80XLBCS, new 1999, 83" 3-stage mast, 122" lift ht., LPG, cushion tires, side shift, 42" forks, S/N D004D07035W.

HYSTER 5,000 LB. CAP. MDL. S50XM, new 2002, 83" 3-stage mast, 189" max. lift ht., LPG, cushion tires, side shift, 42" forks, S/N D187V25709Z.

YALE 5,000 LB. CAP. MDL. GLC050TGNUE082, new 1999, 82" 3-stage mast, 189" max. lift ht., LPG, cushion tires, side shift, 42" forks, S/N E187V11074W.

YALE 4,000 LB. CAP. MDL. GLC040AFNUAV058, new 2000, 58" 2-stage mast, 82" max. lift ht., LPG, cushion tires, side shift, 42" forks, S/N A809N09808X.

ELECTRIC DIE LIFTS

BIG JOE MDL. 2018-A5, 2,000 lb. cap. @ 18" load center, 57" max. lift ht., 32"L. forks, built-in battery charger, S/N 348770.

MULTITON MDL. SM20-96, new 2002, 2,000 lb. cap. @ 24" load center, 96" lift ht., S/N 0893A20437031202.

BRIDGE CRANES

25 T. CAP. NORTH AMERICAN TOP RUNNING DOUBLE BOX GIRDER, approx. 90' span, double end drive, pendant controls, AC powered, Stahl unitized hoist and trolley.

15 T. CAP. NORTH AMERICAN TOP RUNNING SINGLE GIRDER, approx. 40' span, Stahl under-hung unitized hoist and trolley.

2002



HYSTER 5,000-LB. CAP. FORKLIFT

REAL ESTATE NOT FOR AUCTION AVAILABLE FOR PRIVATE NEGOTIATION - SALE OR LEASE

2.6 Acres of Land,
18,375 Sq. Ft. Building,
Located in Schertz Industrial Park, just off FM 3009.

FOR MORE INFORMATION CONTACT JERRY WALSH AT 734-657-5831



PLANT & MACHINERY INC.
AUCTIONEERS • APPRAISERS • LIQUIDATORS • REAL ESTATE

P.O. Box 19100
Houston, TX 77224-9100

DATED MATERIAL - PLEASE DELIVER

**HIGH-SPEED STAMPING
& LATE-MODEL
DIE MAKING FACILITY**

Featuring: Late Mdl. Minster Presses, Bliss High-Speed Press, Servo Feed Equipment, OBI Presses, Straighteners, Horizontal Coil Feeders, Coil Reels, Horizontal Bandsaw, Late Model Die Making Machinery Incl. CNC Vertical Machining Center, Charmilles Robofil EDMs, Vertical Milling Machines, Surface Grinders, C-Frame Press, CMMs, Optical Comparators, Precision Instruments, Furnaces, Air Compressors, Forklifts, Electric Die Lifts, Overhead Cranes, Much More! **PLUS Real Estate for Sale by Private Negotiation (Subject to Prior Sale)!**

PUBLIC INVITED
THURSDAY, OCTOBER 18 • 10:00 A.M.



**ATTENTION: PLANT MANAGER
OR EQUIPMENT BUYER**

Presorted
First Class Mail
U.S. Postage
PAID
Eugene, Oregon
Permit No. 305



**NORTH AMERICAN 25 T. CAP. DOUBLE GIRDER
OVERHEAD BRIDGE CRANE**

PROXY BIDS
If you cannot attend this sale we will bid on your behalf. Contact Houston office at (713) 691-4401 for instructions, or go to our website at www.pmi-auction.com.

LODGING
Hampton Inn (210) 566-6110
Schertz
17702 IH 35 N, Schertz, Texas
Holiday Inn (210) 651-3885
Express Hotel
15408 IH 35 N, Selma, Texas
Best Western (210) 599-0999
11939 IH 35 N, San Antonio, Texas

DIRECTIONS
FROM SAN ANTONIO INTERNATIONAL AIRPORT: Exit airport area and proceed to I-410 Loop. Proceed west on I-410 approximately 4.8 miles to I-35. Take I-35 North exit toward Austin. Proceed approximately 8 1/2 miles. Take Exit 175 for FM-3009/Natural Bridge Caverns Road. Turn left on FM-3009/Natural Bridge Caverns Road/Roy Richard Drive and proceed approximately 1 1/2 miles. Turn left onto Bell North Drive. Proceed to 17312 Bell North Drive. Watch for auction signs.

FINANCE YOUR AUCTION PURCHASE
Conserve Your Cash
& Increase Your Bidding Power
AuctionLea\$e Provides M&E Financing
With Approvals from \$5,000 to \$999,000
(800) 438-1470
Apply Online:
www.AuctionLease.com

PLANT & MACHINERY INC. APPRAISAL DIVISION
Confidential Industrial Machinery & Equipment Appraisals Call
1-800-282-8466

Announcing the Formation of the
REAL ESTATE DIVISION
Call Us at **1-800-AUCTION** for Details

**ARE YOU SELLING
YOUR PLANT?
CALL 1-800-282-8466
FOR A CONFIDENTIAL
CONSULTATION**

TERMS & CONDITIONS

A 10% Buyer's Premium Will Apply.
Everything will be sold to the highest bidder or bidders for cash in accordance with the auctioneer's Customary Terms of Sale, copies of which will be posted on the premises.
ALL PAYMENTS MUST BE MADE BY CASH, CASHIER'S CHECK, WIRE TRANSFER OR COMPANY CHECK WITH BANK LETTER GUARANTEEING PAYMENT TO PLANT & MACHINERY INC.
Here is an example of what your letter should be: *Mr. "Customer Name" is a customer of this bank. This bank will guarantee unqualified payment to PMI on the account listed herein up to the amount of \$ _____. This letter is good until November 19, 2007.*
In default of payment of bills in full within the time therein specified, the Auctioneer in addition to all other remedies allowed by law, may retain all monies received as deposit or otherwise, as liquidated damages. All items must be removed by the time announced at the start of the sale.
Lots not paid for and/or removed within the time allowed may be resold at public or private sale without further notice, and any deficiency, together with all expenses and charge of resale, will be charged to the defaulting purchaser.
The buyer acknowledges that he or an agent has inspected all of the assets upon which he will be bidding and/or does purchase.
Buyer agrees to accept assets purchased **"AS IS," "WITH ALL FAULTS"** and **"WITH REMOVAL AT BUYER'S RISK AND EXPENSE."**

THE AUCTIONEER EXPRESSLY DISCLAIMS ON THE PART OF THE AUCTIONEER AS AGENT AND THE SELLER, ANY WARRANTY AS TO FITNESS OR USABILITY OF ALL THE ASSETS, AND THE BUYER EXPRESSLY WAIVES ANY CLAIM IN RESPECT TO ANY POSSIBLE FUTURE USE OF ANY ASSET PURCHASED FOR ANY PURPOSE WHATSOEVER.
The buyer does hereby assume and does agree to indemnify and hold the auctioneer harmless from any future claim which shall pertain to the fitness or use of that asset as being purchased. Riggers, movers, electricians and buyers performing work at the Auction Site must provide PMI with evidence of insurance. The insurance coverage must be at a level acceptable to PMI and to the seller. PMI reserves the right to withdraw items, alter the order of the sale, accept bids from the seller, and group lots as it may deem appropriate.
Although all information has been obtained from sources deemed reliable, the auctioneer and seller make no warranty or guarantee, expressed or implied, as to the accuracy of the information herein contained, or contained in our catalog. It is for this reason that buyers should avail themselves of the opportunity to make inspection prior to the auction. Although it is not likely, auction sales are subject to cancellation or postponement. Kindly contact auctioneer prior to attendance.
These terms and conditions may be modified or supplemented by language in the catalog available at the sale site or by announcement at the start of the sale. Bidders should be attentive to those announcements and to the catalog language.