

# AUCTION

## MACHINE SHOP & SUPPORT EQUIPMENT

Featuring: Engine & Turret Lathes, CNC Chucker, Jig Mill, CNC Vert. Mill, Horiz. & Vert. Mills, Vert. Turret Mills, Bold Circle Drill, Reciprocating Surface Grinders, Tool & Cutter Grinders, Belt/Disc Grinders, Vert. & Horiz. Bandsaws, Shop Support Equip., Air Compressors, Pedestal Jib Cranes, Forklift, Gooseneck Trailer, More!



AMERICAN 26" X 120" ENGINE LATHE



LONGEM 20" X 80" ENGINE LATHE

2007

At the Premises of  
**LAKE CREEK MACHINE**  
2515 Superior Road  
MAGNOLIA, TEXAS 77354  
*(See Directions on Back Page)*

**AUCTION:**  
**WEDNESDAY**  
**MARCH 16**  
**10:00 A.M.**

**BUYER'S PREMIUM: 15% ON-SITE • 18% WEBCAST**

**INSPECTION:** Tuesday, March 15  
9:00 A.M. to 4:00 P.M. & Morning of Sale

>  
ROCKWELL HR150A  
ANALOG TYPE  
HARDNESS TESTER



2007



BRIDGEPORT VERTICAL  
TURRET MILL



TURN-PRO BS-250A HORIZONTAL BANDSAW



DEVLIEG 3-B JIG MILL

**On-Site Bidding in  
Magnolia, Texas or  
Bid Via Webcast at  
[BidSpotter.com](http://BidSpotter.com)**

*Read Partial Terms  
and Conditions on  
Back Page of Brochure*

Sale Conducted By:

**PLANT & MACHINERY INC.**  
AUCTIONEERS • APPRAISERS • LIQUIDATORS • REAL ESTATE

Ron Moore, Texas Lic. #7314  
HOUSTON • DALLAS • ST. LOUIS

Headquarters:  
1304 Langham Creek Drive, Suite 454  
Houston, Texas 77084

PHONE: (713) 691-4401

FAX: (713) 672-7905

E-MAIL: [pmi@pmi-auction.com](mailto:pmi@pmi-auction.com)  
WEBSITE: [www.pmi-auction.com](http://www.pmi-auction.com)



## ENGINE LATHES

**AXELSON 28-3/4" X 72"**, spds.: 20–300 RPM, 20 HP main motor, 2-1/4" hole, 24" dia. 4-jaw chuck, (2) steadyrests, taper, S/N 1601.

**AMERICAN 26" X 120"**, spds.: 24–1,600 RPM, Acu-Rite 2-axis D.R.O., 18" dia. 4-jaw chuck, thdng. (See Cover Photo)

**LONGEM 20" X 80" MDL. LG-2800DS**, new 2007, spds.: 22.4–1,600 RPM, 3" spndl. hole, 12" dia. 3-jaw chuck, threading, Anilam Wizard 2-axis D.R.O., S/N 072425. (See Cover Photo)

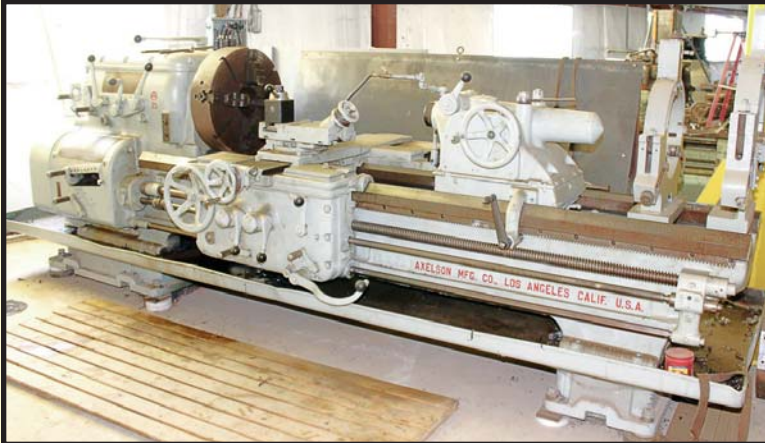
**LONGEM 20" X 80" MDL. LG-2800DS**, spds.: 22.4–1,600 RPM, 3" spndl. hole, 10" dia. 3-jaw chuck, Acu-Rite 2-axis D.R.O., taper, S/N 040046.

**LONGEM 20" X 80" MDL. DG-2080DS**, spds.: 22.4–1,600 RPM, 3" spndl. hole, 12" dia. 3-jaw chuck, Enco Platinum Plus 2-axis D.R.O., taper, S/N 960332.

**AMCO 20" X 60" MDL. CD6245CX1500 GAP BED TYPE**, new 2004, spds.: 24–1,600 RPM, 22" gap, 3" hole, 12" dia. 3-jaw chuck, 6 kW/8 HP main motor, taper, steadyrest, S/N N.A.

**MONARCH 18-1/2" X 54"**, spds.: 24–1,000 RPM, 16" dia. 4-jaw chuck, 1-1/2" spndl. hole, thdng., taper, S/N 34956.

**HENDY 14" X 30" TOOLROOM TYPE**.



**AXELSON 28-3/4" X 72" ENGINE LATHE**



**AMCO 20" X 60" GAP BED TYPE ENGINE LATHE**

**AUCTION: WEDNESDAY, MARCH 16 • 10:00 A.M.**

## RAM TYPE TURRET LATHE

**WARNER & SWASEY 3A**, 6" spndl. hole, 6-pos. turret, 21" dia. 4-jaw chuck, S/N 951982.

## CNC SLANT BED CHUCKER

**MORI SEIKI MDL. SL-2A**, Fanuc 3T CNC control, 2.25" hole, 10-pos. tool turret, 10" dia. 3-jaw chuck, S/N 1742.

## CNC VERTICAL MILL

**HURCO MDL. KM3P**, Hurco Ultimax dual-screen control, spds.: 60–400 RPM, Graymills auto. mist coolant, misc. tooling, S/N KDB-8003127E.

## VERTICAL TURRET MILLS

**TURN-PRO MDL. GS18V**, 10" x 56" tbl., spds.: 70–4,200 RPM, 3 HP motor, pwr. long. tbl. feed, Anilam Wizard 550 3-axis D.R.O., 6" riser, S/N 965147.

**(2) ENCO MDL. 100-1588**, new 2004, 10" x 54" tbl., spds.: 60–4,250 RPM, one with Enco 2-axis and one with 3-axis D.R.O., pwr. long. tbl. feed, S/N 460374, S/N N.A.

**BRIDGEPORT**, 9" x 48" tbl., 2 HP motor, pwr. long. tbl. feed, Newall Mdl. DP7 2-axis D.R.O., S/N BR274300. (See Cover Photo)

**TURN-PRO MDL. GS15V**, 9" x 48" tbl., spds.: 70–4,200 RPM, 3 HP motor, pwr. long. tbl. feed, Anilam Wizard 550 3-axis D.R.O., S/N 9612491.

**BRIDGEPORT SERIES II**, parts machine.

## JIG MILL

**DEVLIEG MDL. 3-B**, 30" x 48" T-slotted tbl., 3" spndl., spds.: 23–1,200 RPM. (See Cover Photo)

## PLAIN HORIZONTAL MILLS

**CINNATI MDL. 3**, 15" x 60" tbl., S/N N.A.

**(2) KEARNEY & TRECKER MILWAUKEE MDL. 307-S-12**, 12" x 64" tbl., spds.: 25–2,000 RPM, S/N 6660649, S/N N.A.

## GUN DRILL

**BARNES TWIN HEAD**, 7' bed, 28" stroke, S/N N.A.



**ENCO 100-1588 VERTICAL TURRET MILL**



**TURN-PRO GS15V VERTICAL TURRET MILL**



**SMITH & MILLS 25" MECHANICAL SHAPER**



**BABIN 12" BOLT CIRCLE DRILL**





**TURN-PRO GS18V  
VERTICAL TURRET MILL**



**KEARNEY & TRECKER MILWAUKEE  
PLAIN HORIZONTAL MILL**

1 of 2



**SAMPLE VIEW OF TOOLING  
AND ACCESSORIES**



**ENCO 5" X 10" HAND-FEED  
SURFACE GRINDER**

### BOLT CIRCLE DRILL

BABIN MDL. 12", S/N 12-186.

### MECHANICAL SHAPER

SMITH & MILLS 25" MDL. 25 B.C., 17-1/2" x 25" T-slotted tbl., 17" X-axis travel, 16" ht. adj., S/N N.A.

### HAND-FEED SURFACE GRINDERS

DOALL 6" X 12" RECIPROCATING TYPE; ENCO 5" X 10" RECIPROCATING TYPE.

### TOOL & CUTTER GRINDERS

BROWN & SHARPE; ENCO; OK, w/comparator; NORTON.

### HORIZONTAL BANDSAWS

TURN-PRO MDL. BS-250A, 10" x 17" cap., spds.: 82-235 RPM, 2 HP motor, S/N 0602065. (See Cover Photo)

TURN-PRO MDL. BS-250, 10" x 17" cap., spds.: 82-235 RPM, 2 HP motor, mitering, S/N N.A.

ENCO PORTABLE HORIZ. BANDSAW.

### VERTICAL BANDSAWS

METAL MIZER MDL. 2018, 18" throat, adj. cutting ht., sliding tbl., hyd. in-feed.

SEVERAL SMALL VERT. BANDSAWS AVAILABLE.

### ANALOG TYPE HARDNESS TESTER

ROCKWELL TYPE MDL. HR150A, new 2007, S/N 2730. (See Cover Photo)

### WELDING MACHINES

PORTABLE SKID MOUNTED DIESEL WELDING POWER SOURCE; LINCOLN PROMIG MDL. 175 WELDING POWER SOURCE; LINCOLN MDL. AC-225 WELDING POWER SOURCE.

### MISCELLANEOUS SHOP & WAREHOUSE EQUIPMENT

BRIERLY DRILL GRINDER; CHRISTEN 2" DRILL GRINDER; (3) TURN-PRO COMBINATION BELT AND DISC GRINDERS, 6" belt, 12" disc; SEIKI VERT. MILL; BALDOR PEDESTAL GRINDER; 8" HORIZ./VERT. ROTARY TABLE; MISC. POWER TOOLS; T-SLOTTED ROTARY TABLES; TOOLING AND ACCESSORIES; LARGE CAP. RADIUS CUTTER; BLAST CABINET; HAND BRAKE; WILTON VSG TWENTY MDL. 2025 FLOOR TYPE DRILL PRESS, 10" throat; 20 HP 3-PHASE CONVERTER; (3) MISC. TRANSFORMERS, 45 KVA, Etc.

### PEDESTAL JIB CRANES

12' HT. X 17' REACH, 1 T. cap. chain fall hoist; 12' HT. X 14' REACH, Yale 1 T. cap. chain hoist; 11' HT. X 12-1/2' REACH, 1 T. cap. chain fall hoist; 10' HT. X 12' REACH, Yale 1 T. cap. chain hoist; 10' HT. X 9' REACH, 1 T. cap. chain hoist; 10' HT. X 9' REACH; 10' X 7' HT., Yale 1 T. cap. hoist.

### ROLLING STOCK

CLARK 4,000-LB. CAP. FORKLIFT, LPG engine, 83" 2-stage mast, 42" forks, cushion tires, S/N N.A.

28' GOOSENECK TRAILER, tandem-axle.

### RECIPROCATING TYPE AIR COMPRESSORS

CAMPBELL HAUSFIELD, 6 HP motor, vert. 60 gal. air receiver; INGERSOLL RAND, 5 HP motor, vert. air receiver.

**INSPECTION:** Tuesday, March 15  
9:00 A.M. to 4:00 P.M. & Morning of Sale

**On-Site Bidding in Magnolia, Texas or Bid Via Webcast at [BidSpotter.com](http://BidSpotter.com)**



**METAL MIZER 2018  
VERTICAL BANDSAW**



**CLARK 4,000-LB. CAP. FORKLIFT**



**PEDESTAL  
JIB CRANE**



**INGERSOLL RAND  
RECIPROCATING  
AIR COMPRESSOR**

6  
AVAILABLE

**PLANT & MACHINERY INC.**  
AUCTIONEERS • APPRAISERS • LIQUIDATORS • REAL ESTATE

P.O. Box 19100  
Houston, TX 77224-9100

**DATED MATERIAL - PLEASE DELIVER**



**PUBLIC INVITED**  
**AUCTION: WED., MARCH 16 • 10:00 A.M.**

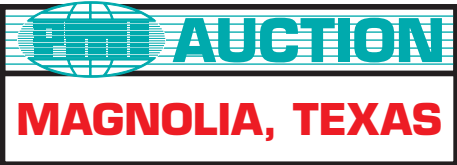


Presorted  
First Class Mail  
U.S. Postage  
PAID  
Eugene, Oregon  
Permit No. 17

**MACHINE SHOP & SUPPORT EQUIPMENT**

Featuring: Engine & Turret Lathes,  
CNC Chucker, Jig Mill, CNC Vert. Mill,  
Horiz. & Vert. Mills, Vert. Turret Mills,  
Bold Circle Drill, Reciprocating Surface  
Grinders, Tool & Cutter Grinders, Belt/Disc  
Grinders, Vert. & Horiz. Bandsaws,  
Shop Support Equip., Air Compressors,  
Pedestal Jib Cranes, Forklift,  
Gooseneck Trailer, More!

**ATTENTION: PLANT MANAGER  
OR EQUIPMENT BUYER**



**DIRECTIONS**

**FROM HOUSTON'S GEORGE BUSH AIRPORT:** Follow the signs south out of the airport area to Beltway 8. Turn right (west) onto Beltway 8 and proceed to Interstate 45. Turn right (north) onto I-45 and proceed to the Conroe, Texas area. Take the exit for FM 1488 and turn left (west) towards Magnolia, Texas. Proceed west on FM 1488 approx. 10.5 miles to Superior Road. Turn right (north) onto Superior Road and proceed approx. 2.5 miles to the auction site ahead on your left. Watch for auction signs.

**LODGING**

La Quinta Inn & Suites, 6930 FM 1488, Magnolia Texas..... (281) 259-1757

**INSPECTION:**

Tuesday, March 15  
9:00 A.M. to 4:00 P.M.  
& Morning of Sale

**On-Site Bidding in Magnolia, Texas  
or Bid Via Webcast at**



**UNABLE TO ATTEND?**

Bid on-line in real time at **BidSpotter.com**  
**TO PARTICIPATE YOU MUST:**

1. Register at [www.BidSpotter.com](http://www.BidSpotter.com). Use the link to BidSpotter on PMI's website calendar. **DO IT NOW.**
2. Either send wire transfer, or, overnight delivery service a cashier's check deposit in the amount of \$3,000 (U.S. Bidders) or \$10,000 (Foreign Bidders) to:

Plant & Machinery Inc.  
1304 Langham Creek Drive, Suite 454, Houston, TX 77084

Wire transfer instructions can be found at [pmi-auction.com](http://pmi-auction.com)  
You must be registered and have your deposit in the hands of Plant & Machinery, Inc. at least 24 hours prior to the start of the auction. Failure to register and/or failure to send your deposit to Plant & Machinery, Inc. may disqualify you from bidding. **DON'T WAIT.**

If you need assistance, don't hesitate to call (713) 691-4401.  
**ALL WEBCAST BIDS ARE SUBJECT TO AN 18% BUYER'S PREMIUM.**

**FINANCE  
YOUR AUCTION  
PURCHASE**

Conserve Your Cash &  
Increase Your Bidding Power

**AuctionLea\$e Provides  
M&E Financing**

**With Approvals from  
\$5,000 to \$999,000**

**(800) 438-1470**

**Apply Online:**  
[www.AuctionLease.com](http://www.AuctionLease.com)

**PARTIAL TERMS & CONDITIONS**

A 15% Buyer's Premium Will Apply On-site.  
An 18% Buyer's Premium Will Apply to Webcast Bids. See Above Rules for Participation.

Everything will be sold to the highest bidder or bidders for cash in accordance with the auctioneer's Customary Terms of Sale, copies of which will be posted on the premises.

**ALL PAYMENTS MUST BE MADE BY CASH, CASHIER'S CHECK, WIRE TRANSFER OR COMPANY CHECK WITH BANK LETTER GUARANTEEING PAYMENT TO PLANT & MACHINERY INC.**

Here is an example of what your letter should be: *Mr. "Customer Name" is a customer of this bank. This bank will guarantee unqualified payment to PMI on the account listed herein up to the amount of \$\_\_\_\_\_. This letter is good until April 18, 2016.*

In default of payment of bills in full within the time therein specified, the Auctioneer in addition to all other remedies allowed by law, may retain all monies received as deposit or otherwise, as liquidated damages. All items must be removed by the time announced at the start of the sale.

Lots not paid for and/or removed within the time allowed may be resold at public or private sale without further notice, and any deficiency, together with all expenses and charge of resale, will be charged to the defaulting purchaser.

The buyer acknowledges that he or an agent has inspected all of the assets upon which he will be bidding and/or does purchase.

Buyer agrees to accept assets purchased **"AS IS," WITH "ALL FAULTS" AND "WITH REMOVAL AT BUYER'S RISK AND EXPENSE."** THE AUCTIONEER EXPRESSLY DISCLAIMS ON THE PART

**OF THE AUCTIONEER AS AGENT AND THE SELLER, ANY WARRANTY AS TO FITNESS OR USABILITY OF ALL THE ASSETS, AND THE BUYER EXPRESSLY WAIVES ANY CLAIM IN RESPECT TO ANY POSSIBLE FUTURE USE OF ANY ASSET PURCHASED FOR ANY PURPOSE WHATSOEVER.**

The buyer does hereby assume and does agree to indemnify and hold the auctioneer harmless from any future claim which shall pertain to the fitness or use of that asset as being purchased. Riggers, movers, electricians and buyers performing work at the Auction Site must provide PMI with evidence of insurance. The insurance coverage must be at a level acceptable to PMI and to the seller. PMI reserves the right to withdraw items, alter the order of the sale, accept bids from the seller, and group lots as it may deem appropriate. This auction may include consignment items.

Although all information has been obtained from sources deemed reliable, the auctioneer and seller make no warranty or guarantee, expressed or implied, as to the accuracy of the information herein contained, or contained in our catalog. It is for this reason that buyers should avail themselves of the opportunity to make inspection prior to the auction. Although it is not likely, auction sales are subject to cancellation or postponement. Kindly contact auctioneer prior to attendance.

These terms and conditions may be modified or supplemented by language in the catalog available at the sale site or by announcement at the start of the sale. Bidders should be attentive to those announcements and to the catalog language.