

AUCTION

WIRELINER SERVICE COMPANY CLOSING

Featuring (6) Wireline Trucks as new as 2012, Wide Assortment of Wireline Tools & Equipment, 28 T. Cap. Crane Truck, (9) Pickup Trucks as new as 2015, 2012 SUV, Trailers up to 28' L., 4,000-Lb. Cap. Forklift



2012

(1 OF 2) INTERNATIONAL MDL. WORKSTAR 7400 SERIES TRUCKS



2007

STERLING CRANE TRUCK

**AUCTION: THURSDAY,
OCTOBER 6 • 10:00 A.M.**

By Order of the Secured Party
**C & S WIRELINER
SERVICES**

Moved for Convenience
of Sale to

**233 Hereford Road
CORPUS CHRISTI,
TEXAS 78408**

(See Directions on Back Page)

INSPECTION:

Wednesday, October 5,
9:00 A.M. to 4:00 P.M.
& Morning of Sale

**BUYER'S PREMIUM:
15% ON-SITE • 18% WEBCAST**



SAMPLE VIEW OF WIRELINER TOOLS



2012

SUPERIOR 20' TRAILER



AS NEW AS
2015

LARGE QUANTITY OF LATE-MODEL PICKUPS AND SUVS



CLARK 4,000-LB. CAP. FORKLIFT

*Read Partial Terms and Conditions
on Back Page of Brochure*

On-Site Bidding in Corpus Christi, Texas or Bid Via Webcast at BidSpotter.com

Sale Conducted By:

PLANT & MACHINERY INC.
AUCTIONEERS • APPRAISERS • LIQUIDATORS • REAL ESTATE

Ron Moore, Texas Lic. #7314

HOUSTON • DALLAS • ST. LOUIS

Headquarters:
1304 Langham Creek Drive, Suite 454
Houston, Texas 77084

PHONE: (713) 691-4401

FAX: (713) 672-7905

E-MAIL: pmi@pmi-auction.com
WEBSITE: www.pmi-auction.com



(1 OF 2) INTERNATIONAL MDL. WORKSTAR 7400 SERIES TRUCKS



INTERNATIONAL 4300 SERIES WIRELINE TRUCK



1999 KENWORTH WIRELINE TRUCK

By Order of the Secured Party
C & S WIRELINE SERVICES
 Moved for Convenience of Sale to
233 Hereford Road
CORPUS CHRISTI, TX 78408
(See Directions on Back Page)

WIRELINE TRUCKS

(2) 2012 INTERNATIONAL MDL. WORKSTAR 7400 SERIES, Maxxforce 10 advanced diesel pwr., tandem-axle, 5,000-lb. grease unit w/Lincoln pneu. pump, 2-drum, (2) 25,000' wirelines, Mobile Power wireline control, partial Scientific Data Systems Warrior well logging system, VIN 1HTWHAZR-7CJ624745, ODO: 68,337 miles, TX Lic. No. CA95003, VIN 1HTWHAZR-5CJ624744, ODO: 73,716 miles, TX Lic. No. CA95004.

2012 INTERNATIONAL 4300 SERIES, Maxxforce 10 advanced diesel power, Allison auto. trans., 5,000-lb. grease unit w/Lincoln pneu. pump, sgl. drum, 25,000' wireline, Mobile Power wireline control, partial Scientific Data Systems Warrior well logging system, TX Lic. No. CA95005, VIN 3HAM-MAAN3CL686933.

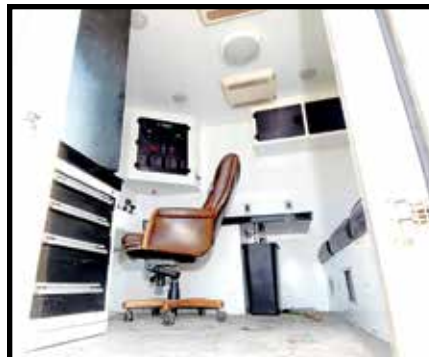
2007 INTERNATIONAL 4300 SERIES, International DT466 diesel engine, 12-spd. trans., 5,000-lb. grease unit w/Lincoln pneu. pump, sgl. drum, 25,000' wireline, Mobile Power wireline control, Scientific Data Systems Warrior well logging system, ODO: 199,572 miles, TX Lic. No. DXK5125, VIN 1HTMMAAN77H506039.

1999 KENWORTH, Caterpillar 3126 diesel engine, 8-spd. trans., 5,000-lb. grease unit w/Lincoln pneu. pump, sgl. drum, 25,000' wireline, Mobile Power wireline control, complete Scientific Data Systems Warrior well logging system, Marathon Magnaplus Synchronous AC 120 v. generator, ODO: 251,692 miles, TX Lic. No. DTW9886, VIN 3BKMHD7X1XF790348.

1993 FORD MDL. F SUPER DUTY, dual rear tires, V-8 engine, 4-spd. trans. w/overdrive, Quick Rig slick line unit, boom attach. extends to 40', sgl. drum, 17' wireline, TX Lic. No. CA22663, VIN 2FDLF47M0PCA14409.



INTERNATIONAL 4300 SERIES WIRELINE TRUCK





AUCTION

**AUCTION: THURSDAY,
OCTOBER 6 • 10:00 A.M.**

2012



**(1 OF 2) INTERNATIONAL
MDL. WORKSTAR 7400 SERIES TRUCKS**



1993 FORD MDL. F SUPER DUTY QUICK-RIG TRUCK



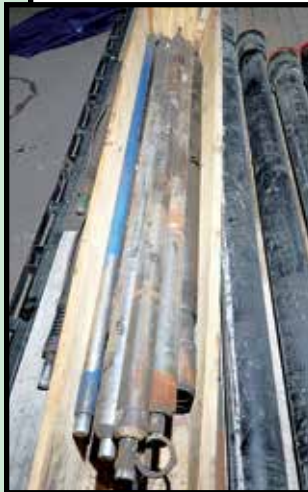
WIRELINE TOOLS & EQUIPMENT

LOT CONSISTING OF: (1) 7-1/16" 10,000-lb. cap. flange, S/N US42870-0A; (1) 10,000-lb. cap. plug valve, S/N TBA; (1) pump in sub, S/N US42870-1; (4) 10' riser tools, S/N US42870-3D, S/N US42870-3E, S/N US42870-3F, S/N US42870-3G; (1) 4' riser tool, S/N US42870-2; (1) top adapter tool, S/N US42870-9A.

LOT CONSISTING OF: (1) 7-1/16" 5,000-lb. cap. flange, S/N US42870-0; (1) 10,000-lb. cap. plug valve, S/N TBA1; (1) pump in sub, S/N US42870-1A; (4) 10' riser tools, S/N US42870-3, S/N US42870-3A, S/N US42870-3B, S/N US42870-3C; (1) 4' riser tool, S/N US42870-2A; (1) tool adapter tool, S/N US42870-9.

LOT CONSISTING OF: (1) number 20 wireline setting tool, S/N CS-20-01 & (1) gamma ray casing collar, S/N GS-GG-04.

(7) WIRELINE SETTING TOOLS; (2) CEMENT BOND LOGGING TOOLS; (4) APPLIED FREE POINT TOOLS; CASING COLLAR LOCATOR TOOL; (3) UPPER BOW SPRINGS; GAMMA RAY CASING COLLAR; (2) GAMMA RAY LOGGING TOOLS; (2) NOISE TEMP CASING COLLARS.



**On-Site
Bidding in
Corpus
Christi, Texas
or Bid Via
Webcast at
BidSpotter.com**

INSPECTION:

Wednesday,
October 5,
9:00 A.M.
to 4:00 P.M.
& Morning of Sale

2015



FORD MDL. F-250XL SUPER DUTY 4X4 OFF ROAD PICKUP TRUCK



2014

FORD MDL. F-150XLT 4X4 PICKUP TRUCK

PICKUP TRUCKS

2015 FORD MDL. F-250XL SUPER DUTY 4X4 OFF ROAD, crew cab, V-8 gasoline engine, auto. trans., Ranch Hand brush guard, Weatherguard diamond plate steel toolbox, external fuel tank, Fill-Rite 15 GPM pump, ODO: 53,343 miles, TX Lic. No. DTW8706, VIN 1FT7W2B6FEA39051.

2014 FORD MDL. F-150XLT 4X4, crew cab, V-8 gasoline engine, auto. trans., Weather Guard diamond plate steel toolbox, ODO: 95,285 miles, TX Lic. No. DTW8628, VIN 1FTFW1EF6EKD37649.

2013 FORD LARIAT MDL. F-350 SUPER DUTY PLATINUM, Powerstroke B 6.7 liter B20 diesel engine, auto. trans., Ranch Hand brush guard, external aluminum diamond plate fuel tank, Great Plains Industries pump, ODO: 134,562 miles, TX Lic. No. CHW7236, VIN 1FT8W3BT2DEB33653.

2013 FORD MDL. F-250XL SUPER DUTY 4X4 OFF ROAD, crew cab, V-8 gasoline engine, auto. trans., Ranch Hand brush guard, Weatherguard diamond plate steel toolbox, ODO: 118,616 miles, TX Lic. No. BXH0391, VIN 1FT7W2B-66DEA90810.

2012 FORD MDL. F-250XLT SUPER DUTY 4X4 OFF ROAD, crew cab, Powerstroke 6.7 liter diesel, auto. trans., Ranch Hand brush guard, diamond plate steel toolbox, ODO: 194,495 miles, TX Lic. No. BP11438, VIN 1FT7W2BTXCEA96579.

2012 FORD MDL. F-250XL SUPER DUTY 4X4 OFF ROAD, crew cab, V-8 gasoline engine, auto. trans., Ranch Hand brush guard, Weatherguard diamond plate steel toolbox, ODO: 163,085 miles, TX Lic. No. BT47477, VIN 1FT7W2B-62CEA02222.

2011 FORD MDL. F-250XL SUPER DUTY 4X4 OFF ROAD, crew cab, V-8 gasoline engine, auto. trans., gasoline engine, flex fuel, Ranch Hand brush guard, Weatherguard diamond plate steel toolbox, ODO: 160,467 miles, TX Lic. No. BG04896, VIN 1FT7W2B69BEC80596.

2011 FORD MDL. F-250XL SUPER DUTY 4X4 OFF ROAD, Powerstroke 6.7 liter B20 turbo diesel auto. trans., Ranch Hand brush guard, Weatherguard diamond plate steel toolbox, ODO: 203,684 miles, TX Lic. No. FLC7977, VIN 1FT7W2BTXBEC63666.

2011 FORD MDL. F-150XLT 4X4, crew cab, V-8 gasoline engine, auto. trans., Weatherguard diamond plate steel toolbox, ODO: 239,843 miles, TX Lic. No. BE49925, VIN 1FTFW1EF0BFB9408.



2013

FORD LARIAT MDL. F-350 SUPER DUTY PLATINUM PICKUP TRUCK



2012

FORD MDL. F-250XLT SUPER DUTY 4X4 OFF ROAD PICKUP TRUCK

2011



FORD MDL. F-150XLT 4X4 PICKUP TRUCK



2012

FORD MDL. F-250XLT SUPER DUTY 4X4 OFF ROAD PICKUP TRUCK

2007



CRANE TRUCK

2007 **STERLING**, Caterpillar C9 diesel engine, Manitex 28 T. cap. Mdl. M2892S extendable boom hyd. crane, extendable to 103', tandem-axle, ODO: 49,232 miles, TX Lic. No. CA95006, VIN 2FZH-AWDA77AX08690.

**AUCTION:
THURSDAY,
OCTOBER 6
10:00 A.M.**

SPORT UTILITY VEHICLE

2012 **NISSAN ARMADA SL**, 5.6 liter V-8 gasoline engine, flex fuel, auto. trans., ODO: 117,399 miles, TX Lic. No. DD2J730, VIN 5N1BA0NDXC600075.

By Order of the Secured Party

C & S WIRELINE SERVICES

Moved for Convenience of Sale to

**233 Hereford Road
CORPUS CHRISTI, TX 78408**

(See Directions on Back Page)



2012



FORKLIFT

CLARK 4,000-LB. CAP., LPG engine, Triplex mast, cushion tires, overhead guard, S/N 007887351COF.



2012

SUPERIOR 20' TRAILER

TRAILERS

TOPH 28', new 2011, tandem-axle, TX Lic. No. 4029224, VIN 4R7BU20-23BT108014.

SUPERIOR 20', new 2012, tandem-axle, TX Lic. No. 33009P, VIN 4P5F820-27C117404.



2011

TOPH 28' TRAILER

**On-Site Bidding in Corpus Christi,
Texas or Bid Via Webcast at**

BidSpotter.com

PLANT & MACHINERY INC.

AUCTIONEERS • APPRAISERS • LIQUIDATORS • REAL ESTATE

P.O. Box 19100
Houston, TX 77224-9100

DATED MATERIAL - PLEASE DELIVER



PUBLIC INVITED
AUCTION: THURS., OCT. 6 • 10:00 A.M.



**ATTENTION: PLANT MANAGER
OR EQUIPMENT BUYER**

Presorted
First Class Mail
U.S. Postage
PAID
Eugene, Oregon
Permit No. 17

WIRELINE SERVICE COMPANY CLOSING

Featuring (6) Wireline Trucks as new as
2012, Wide Assortment of Wireline Tools
& Equipment, 28 T. Cap. Crane Truck,
(9) Pickup Trucks as new as 2015,
2012 SUV, Trailers up to 28' L.,
4,000-Lb. Cap. Forklift



DIRECTIONS

FROM I-37 NORTH: Take North Padre Island Drive Exit 4A and proceed 1/2 mile to Leopard Street Exit. Turn left on Leopard and proceed 1/4 mile. Turn right on Hereford Road. Proceed to auction site on the right hand side, 233 Hereford Road, Corpus Christi, Texas 78408. Watch for auction signs.

LODGING

Holiday Inn..... (361) 289-5100
5549 Leopard Street, Corpus Christi, Texas 78408
Plaza Inn..... (361) 289-8200
2021 N Padre Island Drive, Corpus Christi, Texas 78408
Wind Water Hotel..... (361) 289-2500
1901 N Padre Island Drive, Corpus Christi, Texas 78408

UNABLE TO ATTEND?

Bid on-line in real time at **BidSpotter.com**

TO PARTICIPATE YOU MUST:

1. Register at www.BidSpotter.com. Use the link to BidSpotter on PMI's website calendar. **DO IT NOW.**
2. Either send wire transfer, or, overnight delivery service a cashier's check deposit in the amount of \$3,000 (U.S. Bidders) or \$10,000 (Foreign Bidders) to:

Plant & Machinery Inc.
1304 Langham Creek Drive, Suite 454, Houston, TX 77084

Wire transfer instructions can be found at pmi-auction.com
You must be registered and have your deposit in the hands of Plant & Machinery, Inc. at least 24 hours prior to the start of the auction. Failure to register and/or failure to send your deposit to Plant & Machinery, Inc. may disqualify you from bidding. **DON'T WAIT.**

If you need assistance, don't hesitate to call (713) 691-4401.
ALL WEBCAST BIDS ARE SUBJECT TO AN 18% BUYER'S PREMIUM.

FINANCE

YOUR AUCTION PURCHASE

Conserve Your Cash &
Increase Your Bidding Power

**AuctionLea\$e Provides
M&E Financing**

**With Approvals from
\$5,000 to \$999,000**

(800) 438-1470

Apply Online:
www.AuctionLease.com

PARTIAL TERMS & CONDITIONS

A 15% Buyer's Premium Will Apply On-site.
An 18% Buyer's Premium Will Apply to Webcast Bids. See Above Rules for Participation.

Everything will be sold to the highest bidder or bidders for cash in accordance with the auctioneer's Customary Terms of Sale, copies of which will be posted on the premises.

ALL PAYMENTS MUST BE MADE BY CASH, CASHIER'S CHECK, WIRE TRANSFER OR COMPANY CHECK WITH BANK LETTER GUARANTEEING PAYMENT TO PLANT & MACHINERY INC.

Here is an example of what your letter should be: *Mr. "Customer Name" is a customer of this bank. This bank will guarantee unqualified payment to PMI on the account listed herein up to the amount of \$_____. This letter is good until November 7, 2016.*

In default of payment of bills in full within the time therein specified, the Auctioneer in addition to all other remedies allowed by law, may retain all monies received as deposit or otherwise, as liquidated damages. All items must be removed by the time announced at the start of the sale.

Lots not paid for and/or removed within the time allowed may be resold at public or private sale without further notice, and any deficiency, together with all expenses and charge of resale, will be charged to the defaulting purchaser.

The buyer acknowledges that he or an agent has inspected all of the assets upon which he will be bidding and/or does purchase.

Buyer agrees to accept assets purchased "AS IS," WITH "ALL FAULTS" AND "WITH REMOVAL AT BUYER'S RISK AND EXPENSE." THE AUCTIONEER EXPRESSLY DISCLAIMS ON THE PART

OF THE AUCTIONEER AS AGENT AND THE SELLER, ANY WARRANTY AS TO FITNESS OR USABILITY OF ALL THE ASSETS, AND THE BUYER EXPRESSLY WAIVES ANY CLAIM IN RESPECT TO ANY POSSIBLE FUTURE USE OF ANY ASSET PURCHASED FOR ANY PURPOSE WHATSOEVER.

The buyer does hereby assume and does agree to indemnify and hold the auctioneer harmless from any future claim which shall pertain to the fitness or use of that asset as being purchased. Riggers, movers, electricians and buyers performing work at the Auction Site must provide PMI with evidence of insurance. The insurance coverage must be at a level acceptable to PMI and to the seller. PMI reserves the right to withdraw items, alter the order of the sale, accept bids from the seller, and group lots as it may deem appropriate. This auction may include consignment items.

Although all information has been obtained from sources deemed reliable, the auctioneer and seller make no warranty or guarantee, expressed or implied, as to the accuracy of the information herein contained, or contained in our catalog. It is for this reason that buyers should avail themselves of the opportunity to make inspection prior to the auction. Although it is not likely, auction sales are subject to cancellation or postponement. Kindly contact auctioneer prior to attendance.

These terms and conditions may be modified or supplemented by language in the catalog available at the sale site or by announcement at the start of the sale. Bidders should be attentive to those announcements and to the catalog language.